



University COLLEGIATE RFID SLEEVES

Artwork Template

Dimensions: 2-1/4 x 3-3/8

IMPORTANT: For best results, use artwork that is either EPS vector outline format or at least 300 dpi CMYK format. For readable text, use at least 8 pt. To avoid font issues (even with PDFs), please convert all text elements to vector outline.

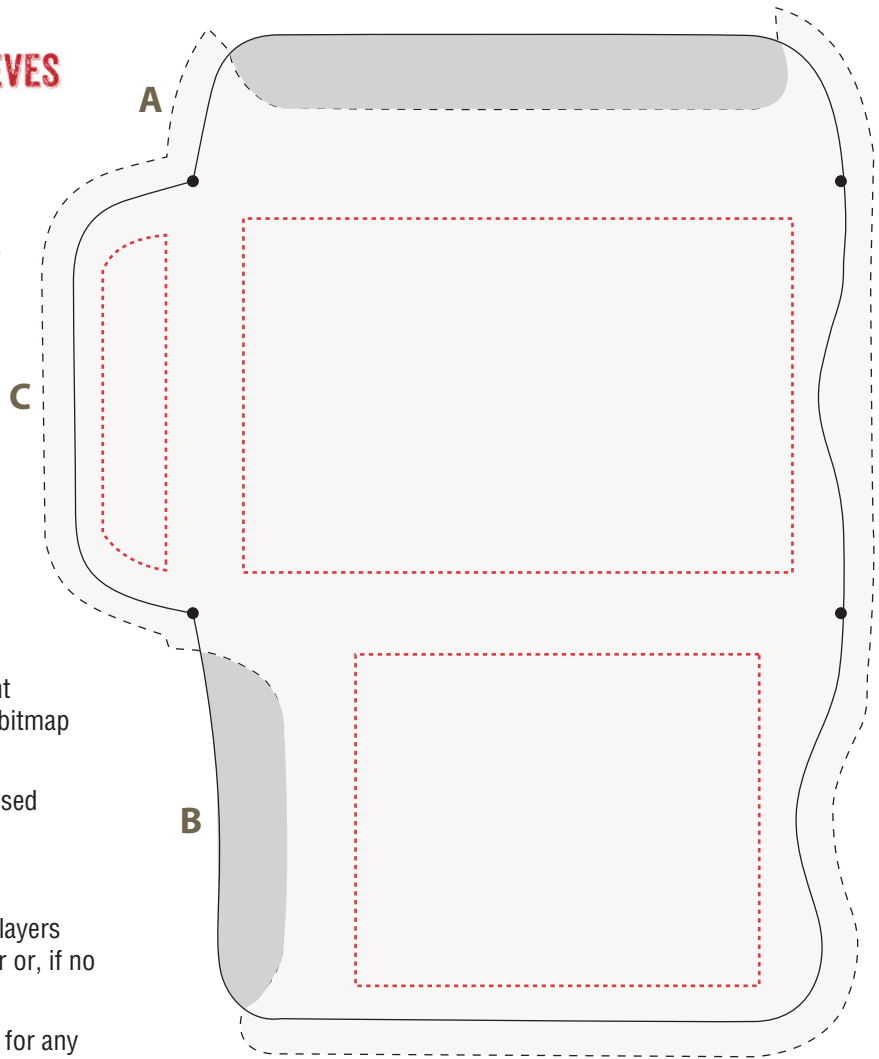
How to use this template

This pdf template was created in Adobe Illustrator CS3 and was saved preserving Illustrator's editing capabilities ("layers"). Using Adobe Illustrator would work best, however, you may use any variety of graphics editing or desktop publishing software with this template as long as the program can:

1. Create vector outlines for any text elements (avoids font conflicts), or format the text as 1200 dpi black and white bitmap TIFF line art.
2. Generate a PDF containing high resolution or vector-based images/graphics
3. Use CMYK color space.

Place/import template into your editing program and use layers mode where available. Always keep template as base layer or, if no layer mode, behind your artwork.

When saving PDF, use no downsampling or compression for any raster images you may be using and check off the box that reads Preserve Illustrator's Editing Capabilities.



Flat (unfolded) view

Use the template above right if your artwork intends to bleed fully or extends beyond a folded edge. Keep live matter within the red dotted line areas. Recommend cutting out sleeve shape and folding up to see how artwork falls. Fold A first, then B, and finally, C. Use the templates below, if your artwork is just a logo and some text on front and/or back.

face copy view of folded sleeve

back copy view of folded sleeve

