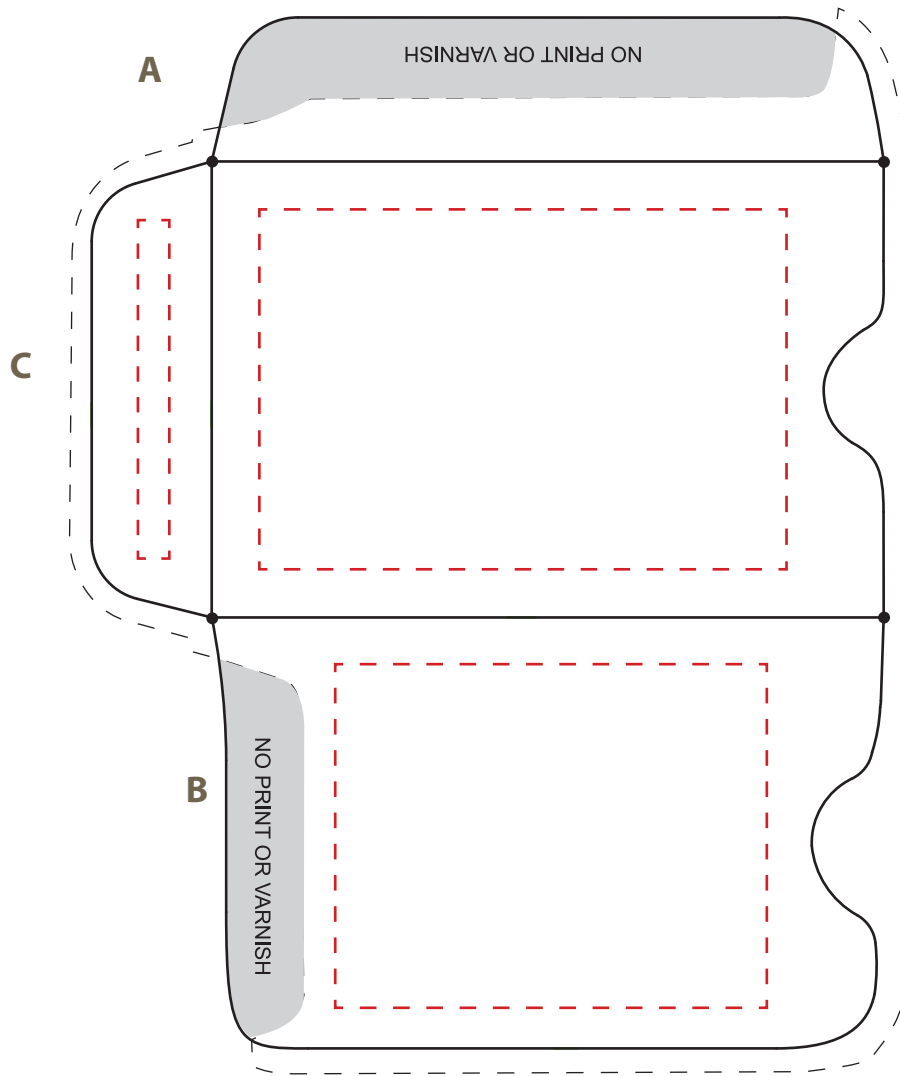


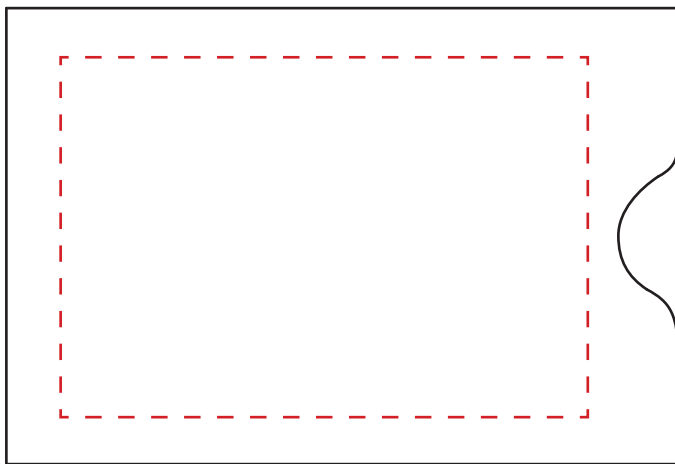
## 2.375"x3.5" Deep Thumb Notch Side Seam Sleeve\_Outside (Face) Template



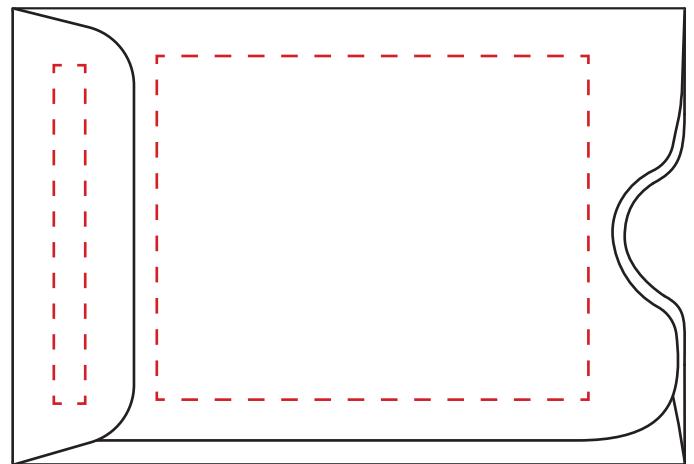
**Note: Keep all Live Matter within the red dotted line areas.**

For best results, once you've placed your artwork, please cut out the template at left along the solid line. Then fold A first, B next, and C last, using the black dots as guides with each fold. This will show how your artwork will appear when sleeve is folded.

If your artwork does not wrap around from one side to the other, you may impose your artwork on the templates below, keeping live matter away from edges and folds at least 3/16".



face copy



back copy - flip top to bottom

Sleeve size  
2.375" x 3.5"