

## Ticket Envelopes: Four Styles for Every Venue, Every Occasion

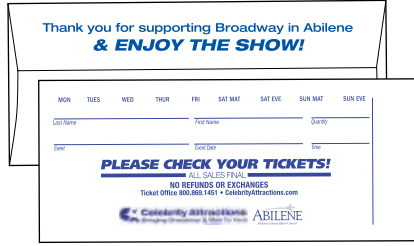
ASI #86872 -  
SAGE #64920

Select your choice from 4 of our most popular ticket envelopes. Styles A, B, and C, are designed to hold tickets for a single event. Style D will hold nearly an unlimited number of tickets or months of travel plans and schedules.

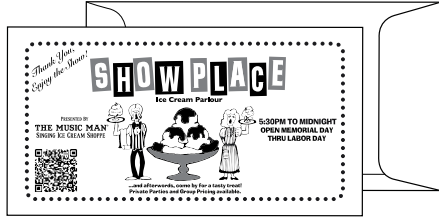
Available unprinted or custom printed with your artwork. 5-day lead time required for custom printing.

**FREE PRINTING**  
 on backside when colors are  
 the same as on the face.

**Style A**  
 TicketMaster® (3" x 7")  
 Opens on long dimension



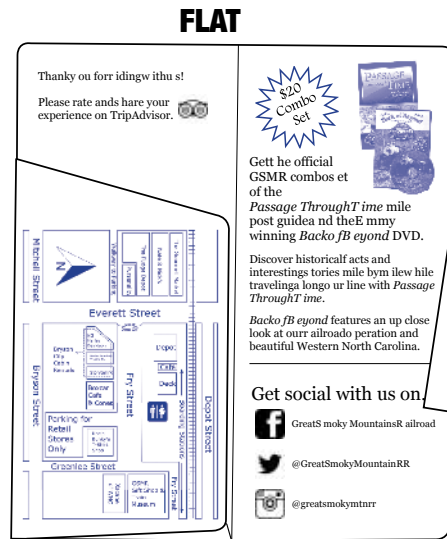
**Style B**  
 #7 Coin (3-1/2" x 6-1/2")  
 Opens on short dimension



**Style C**  
 3" x 5-3/4"  
 Opens on long dimension



**Style D Travel & Ticket Folder**  
 3-3/4" x 8-1/2" (folded)  
 Shipped flat (7-1/2" x 8-1/2")



**FOLDED**



		LOT PRICE   PRICES PER 1,000 ENVELOPES				
	ITEM #	500	1,000	2,500	5,000	10,000
Unprinted	TE-A-000	\$97/lot	\$119	\$76	\$58	\$53
	TE-B-000					
	TE-C-000					
Black Ink	TE-A-001	\$194/lot	\$216	\$112	\$73	\$65
	TE-B-001					
	TE-C-001					
1 Color	TE-A-100	\$221/lot	\$245	\$129	\$83	\$75
	TE-B-100					
	TE-C-100					
Black & 1 Color	TE-A-202	\$252/lot	\$279	\$145	\$95	\$85
	TE-B-202					
	TE-C-202					
2 Color	TE-A-200	\$279/lot	\$311	\$162	\$106	\$95
	TE-B-200					
	TE-C-200					

**Custom Print Set Up:** 1-2 Colors: \$45  
**PMS ink match:** \$20 per color. No match charge for PMS Reflex Blue, PMS 185 Red, PMS 348 Green.

		LOT PRICE   PRICES PER 1,000 ENVELOPES				
	ITEM #	500	1,000	2,500	5,000	10,000
Unprinted	TE-D-000	\$147/lot	\$164	\$106	\$98	\$92
Black Ink	TE-D-001	\$365/lot	\$406	\$210	\$136	\$123
1 Color	TE-D-100	\$431/lot	\$479	\$249	\$161	\$145
Black & 1 Color	TE-D-202	\$469/lot	\$520	\$271	\$176	\$157
2 Color	TE-D-200	\$523/lot	\$581	\$303	\$196	\$176

**Custom Print Set Up:** 1-2 Colors: \$45  
**PMS ink match:** \$20 per color. No match charge for PMS Reflex Blue, PMS 185 Red, PMS 348 Green.

## IMPORTANT

Printing must be line copy or small reverses only. No bleeds. No hairline register. All copy must be approved. Template for fitting your content provided.  
**PROOFS (PDF or FAX):** No charge  
**RUSH SERVICE AVAILABLE.**  
**TERMS:** We are pleased to accept all major credit cards at the time of order entry. UPS freight to be added, FOB Auburn, MA.  
**WEIGHT PER 1000:** Style A - 10#; Style B - 12#; Style C - 11#; Style D - 16#